



RF 85mm f/2 Macro IS STM

Canon

RF 85mm f/2 Macro IS STM

The new standard for medium telephoto, single focal length lenses that allows you to enjoy full-frame rendering



High quality and added value of half macro and Image Stabilization

The RF 85mm f/2 Macro IS STM has high-quality maximum aperture of f/2.0. It includes Image Stabilizer that reduces the effects of camera shake, and incorporates the new added value of half macro to increase the power of expression.



Significantly reduce camera shake

With the in-lens 5-stops Image Stabilizer achieve super stable images. In addition to low ISO speed settings and slow shutter, you can obtain high image quality with less noise.



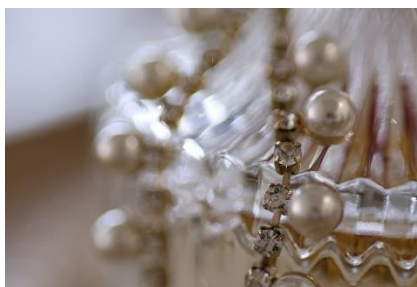
Beautiful, dramatic bokeh from the large aperture

With nine circular apertures, you can enjoy not only the size but also the beautiful shape of the bokeh. The subject is completely drawn out from the background.



Optimal for portraits

The 85mm medium telephoto, single focal length lens is ideal for portraits. You can shoot with a moderate sense of distance without pressure and easy communication.



Supports half macro to expand the power of expression

The RF 85mm f/2 Macro IS STM has improved image quality at close range by using a UD lens. With 0.5x half macro support, you can perform excellent closeup macro shooting.

SPECIFICATIONS



RF 85mm f/2 Macro IS STM	
Mount	RF
Focal length	85 mm
Maximum aperture	f/2
Minimum focusing distance	0.35 m
Maximum magnification	0.5x
Lens construction	12 elements in 11 groups
Special lenses	One UD lens
Filter size diameter	67 mm
Aperture blades	9 (circular)
IS (CIPA standard correction effect)	Five stops
Focus drive system	STM
Total length	Approx. 90.5 mm
Maximum diameter	Approx. 78 mm
Weight	Approx. 500 g
Lens Hood	ET-77 (sold separately)
Lens Cap	E-67II (supplied)