

# IXUS 285 HS

## SPECIAL MOMENTS NOW EVEN CLOSER



Slim enough to carry everywhere, the IXUS 285 HS camera is equipped with advanced features for creating a wide range of amazing images. The 20.2 Megapixel High-Sensitivity CMOS sensor plus DIGIC 4+ Image Processor create the Canon HS SYSTEM for excellent resolution and beautifully clear shots even in low light.

### Share your favourite images

Share what you've created right away with built-in Wi-Fi® and NFC that lets you transfer images and video to compatible mobile devices and select social networking sites with the touch of the Mobile Device Connect Button.

### 12x Optical Zoom

Zoom to great lengths with the 12x Optical Zoom (25-300mm) while Intelligent IS helps to create crisp, virtually shake-free images throughout the zoom range in all kinds of conditions.

### Creative Versatility

Innovative features like Smart Auto with 32 inbuilt scenes as well as filters such as toy camera and fish eye effect offer new twists to your creative vision.

### HD Movies

Bring your memories to life as you experience videos in Full HD quality with the IXUS 285 HS.

*no one sees it like you*

**Canon**

# IXUS 285 HS

SPECIAL MOMENTS NOW EVEN CLOSER

12x  
OPTICAL  
ZOOM



20.2 MEGA  
PIXELS  
CMOS



Capture quality images from a far distance with a 12x optical zoom



Share and print your images instantly with inbuilt Wi-Fi and NFC



A large 20.2 Megapixel CMOS sensor enables incredible image quality even in low light situations

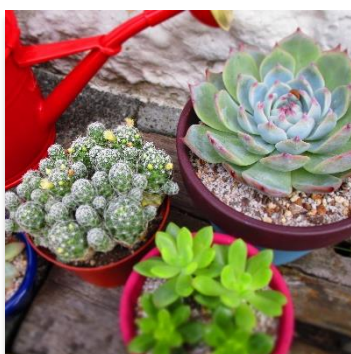


Creative Shot

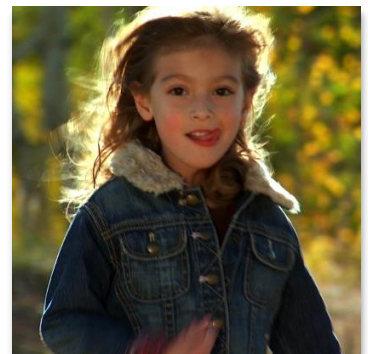
Smart  
AUTO  
32 SCENES



Get artistic with Creative Filters like Toy Camera and Fish Eye effect



Let the camera do the heavy lifting for you, with 32 pre set and pre configured shooting modes to ensure you get the best shot every time



Bring your memories to life as you experience videos in Full HD quality

*no one sees it like you*

**Canon**



# IXUS 285 HS

## Technical Specifications

<b>IMAGE SENSOR</b>	
Type	1/2.3 type back-illuminated CMOS
Effective Pixels	Approx. 20.2M [14]
Effective / Total Pixels	Approx. 21.1M
Colour Filter Type	Primary Colour
<b>IMAGE PROCESSOR</b>	
Type	DIGIC 4+ with ISAPS technology
<b>LENS</b>	
Focal Length	4.5 – 54.0 mm (35 mm equivalent: 25 – 300 mm)
Zoom	Optical 12x ZoomPlus 24x Digital approx. 4x. (with Digital Tele-Converter Approx. 1.6x or 2.0x) Combined approx. 48x [1]
Maximum f/number	f/3.6 – f/7.0
Construction	9 elements in 7 groups (1 double-sided aspherical UA lens, 1 double-sided aspherical lens, 1 single-sided aspherical lens)
Image Stabilisation	Yes (lens shift-type), approx. 2.5-stop [13]. Intelligent IS plus 4-axis Enhanced Dynamic IS
<b>FOCUSING</b>	
Type	TTL
AF System/ Points	AiAF (Face Detection / 9-point), 1-point AF (fixed to centre)
AF Modes	Single, Continuous (Auto mode only), Servo AF/AE, Tracking AF[6]
AF Assist Beam	Yes
Closest Focusing Distance	1 cm (W) from front of lens in Macro
<b>EXPOSURE CONTROL</b>	
Metering modes	Evaluative (linked to Face Detection AF frame), Centre-weighted average, Spot (Centre)
AE Lock	Yes
Exposure Compensation	+/- 2 EV in 1/3 stop increments. Enhanced i-Contrast for automatic dynamic range correction
ISO sensitivity	AUTO, 80, 100, 200, 400, 800, 1600, 3200
<b>SHUTTER</b>	
Speed	1 – 1/2000 sec. (factory default) 15 – 1/2000 sec. (total range – varies by shooting mode)
<b>WHITE BALANCE</b>	
Type	TTL
Settings	Auto (including Face Detection WB), Daylight, Cloudy, Tungsten, Fluorescent, Fluorescent H, Custom.
<b>COLOUR MATRIX</b>	
Type	sRGB
<b>LCD MONITOR</b>	
Monitor	7.5 cm (3.0") LCD (TFT), Approx. 461,000 dots
Coverage	Approx. 100%
Brightness	Adjustable to one of five levels. Quick-bright LCD

<b>FLASH</b>	
Modes	Auto, Manual Flash On / Off, Slow Synchro
Slow Sync Speed	Yes. Fastest speed 1/2000 sec.
Red-Eye Reduction	Yes
Flash Exposure Compensation	Face Detection FE, Smart Flash Exposure
Built-in Flash Range	50 cm – 4.0 m (W) / 1.0 m – 2.0 m (T)
External Flash	Canon High Power Flash HF-DC2
<b>SHOOTING</b>	
Modes	Hybrid Auto, Creative Shot, SCN (Smart Auto (32 scenes detected), P, Portrait, Smart Shutter (Smile, Wink Self-Timer, FaceSelf-Timer), High-speed Burst (5.0 MP), Handheld Night Scene, Low Light (5.0 MP), Fish-eye Effect, Miniature Effect, Toy Camera Effect, Monochrome, Super Vivid, Poster Effect, Fireworks, Long Shutter)
Modes in Movie	Smart Auto (21 scenes detected), P, Portrait, Miniature Effect, Monochrome, Super Vivid, Poster Effect, Fireworks
Drive modes	My Colors (My Colors Off, Vivid, Neutral, Sepia, Black & White, Positive Film, Lighter Skin Tone, Darker Skin Tone, Vivid Blue, Vivid Green, Vivid Red, Custom Color)
Continuous Shooting	Single, Continuous, Self-Timer
<b>RECORDING PIXELS / COMPRESSION</b>	
Image Size	4:3 - (L) 5184 x 3888, (M) 2592 x 1944, (M1) 3648 x 2736, (M2) 2048 x 1536, (S) 640 x 480 16:9 - (L) 5184 x 2912, (M1) 3648 x 2048, (M2) 1920 x 1080, (S) 640 x 360 3:2 - (L) 5184 x 3456, (M1) 3648 x 2432, (M2) 2048 x 1368, (S) 640 x 424 1:1 - (L) 3888 x 3888, (M1) 2736 x 2736, (M2) 1536 x 1536, (S) 480 x 480
Compression	Resize option available in playback Superfine, Fine
Movies	(Full HD) 1920 x 1080, 29.97 fps, (HD) 1280 x 720, 29.97 fps, (L) 640 x 480, 29.97 fps
Movie Length	Miniature Effect (HD, L) 6 fps, 3 fps, 1.5 fps Hybrid Auto (HD) 29.97 fps (Full HD & HD) Up to 4 GB or 29 min 59 s [7] (L) Up to 4 GB or 1 hour [4]
<b>FILE TYPES</b>	
Still Image Type	JPEG compression, (Exif 2.3 [Exif Print] compliant) / Design rule for Camera File system, Digital Print Order Format [DPOF] Version 1.1 compliant
Movies	MP4 [Video: MPEG4-AVC / H.264, Audio: MPEG4 AAC-LC (monaural)]

For more information visit  
[canon.com.au](http://canon.com.au)  
[canon.co.nz](http://canon.co.nz)

no one sees it like you

**Canon**

# IXUS 285 HS

<b>DIRECT PRINT</b> Canon Printers PictBridge	Canon SELPHY Compact Photo Printers and Canon Inkjet Printers supporting PictBridge Yes (via USB or Wireless LAN)
<b>OTHER FEATURES</b> GPS Red-Eye Correction Intelligent Orientation Sensor Histogram  Playback zoom  Self Timer Menu Languages	GPS via mobile (via Canon Camera Connect app with compatible smart devices) Yes Yes, with Auto Rotate Yes, during playback  Approx. 2x – 10x  Approx. 2 or 10 sec. or Custom English, German, French, Dutch, Danish, Finnish, Italian, Norwegian, Swedish, Spanish, Simplified Chinese, Chinese (traditional), Japanese, Russian, Portuguese, Korean, Greek, Polish, Czech, Hungarian, Turkish, Thai, Arabic, Ukrainian, Romanian, Farsi, Malaysian, Hindi, Indonesian, Vietnamese, Hebrew
<b>INTERFACE</b> Computer  Other  Computer/Other	Hi-Speed USB composite connector (Mini-B compatible)  A/V output, dedicated connector (PAL/NTSC)  Wi-Fi (IEEE802.11b/g/n), (2.4 GHz only), with Dynamic NFC support [11]
<b>MEMORY CARD</b> Type	SD, SDHC, SDXC
<b>SUPPORTED OPERATING SYSTEM</b> PC & Macintosh	Windows 10 / 8.1 / 8 / 7 SP1 [18] Mac OS X 10.9 / 10.10 / 10.11  For Wi-Fi connection to a PC: Windows 10 / 8.1 / 8 / 7 SP1 Mac OS X 10.9 / 10.10  For Image Transfer Utility: Windows 10 / 8.1 / 8 / 7 SP1 Mac OS X 10.9 / 10.10 / 10.11
<b>SOFTWARE</b> Other	CameraWindow DC Map Utility Image Transfer Utility  Camera Connect app available on iOS and Android devices

<b>POWER SOURCE</b> Batteries  Battery life	Rechargeable Li-Ion Battery NB-11L/ NB-11LH (NB-11LH Battery and charger supplied)  Approx. 180 shots  Eco Mode: Approx. 265 shots Playback Mode: Approx. 240 min
<b>ACCESSORIES</b> Flash  Power Supply & Battery Chargers  Other	Canon High Power Flash HF-DC2  Battery Charger CB-2LFE / CB-2LDE, Rechargeable Li-Ion Battery NB-11L/ NB-11LH  Canon AV Cable AVC-DC400 Interface cable IFC-400PCU
<b>PHYSICAL SPECIFICATIONS</b> Operating Environment Dimensions (WxHxD) Weight	0 – 40° C, 10 – 90% humidity 99.6 x 58.0 x 22.8 mm Approx. 147 g (including battery and memory card)

All data is based on Canon standard testing methods (according to CIPA Standards) except where indicated.

Subject to change without notice.

[1] Depending on the image size selected.

[3] Under conditions where the flash does not fire.

[4] Depending on memory card speed / capacity / compression setting.

[6] Some settings limit availability.

[7] The following Speed Class memory cards are required for maximum record time: (HD) 1280 x 720 Speed Class 4 or above. (Full HD) 1920 x 1080 Speed Class 6 or above. (iFrame) 1280 x 720 Speed Class 6 or above.

[11] Wi-Fi use may be restricted in certain countries or regions. Wi-Fi support varies by device and region.

[13] Values at maximum optical focal length. Cameras whose focal length exceeds 350 mm (35 mm equivalent) are measured at 350 mm.

[14] Image processing may cause a decrease in the number of pixels.

[18] Software applications compatible with Windows 10 in Windows 10 Desktop Mode only

*no one sees it like you*

For more information visit  
[canon.com.au](http://canon.com.au)  
[canon.co.nz](http://canon.co.nz)

**Canon**